



SANITAIR FILLER

REPARATIESET KERAMIEK

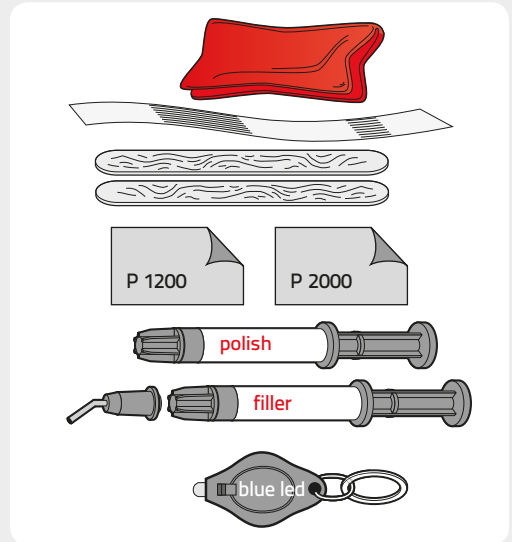
SANITAIR FILLER

REPARATIESET KERAMIEK

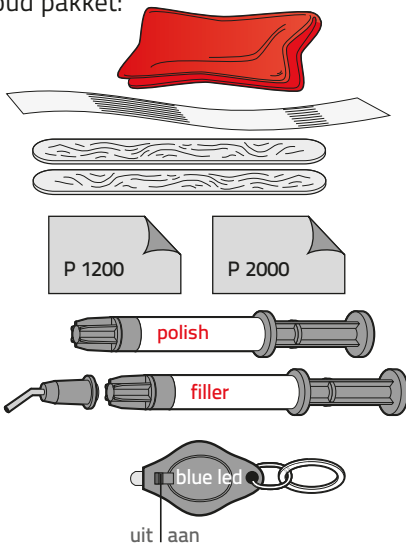
Geleverd door Beltraco Benelux B.V.



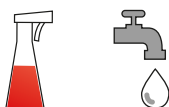
Biestkampweg 21
5249 JV Rosmalen (NL)
T +31 (0)73 - 645 03 43
W www.beltraco.nl
E info@beltraco.nl



Inhoud pakket:

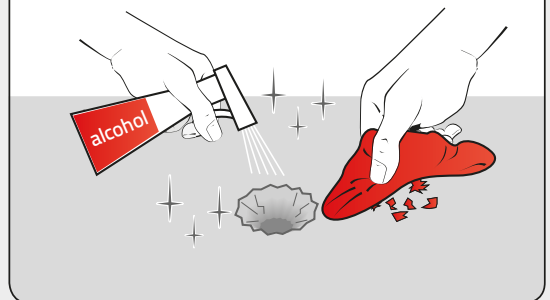


Eigen benodigdheden: alcohol en water



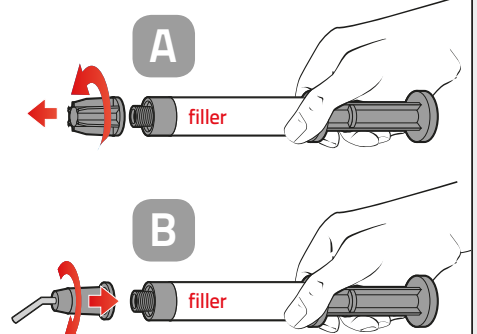
1

Reinigen met alcohol of spiritus

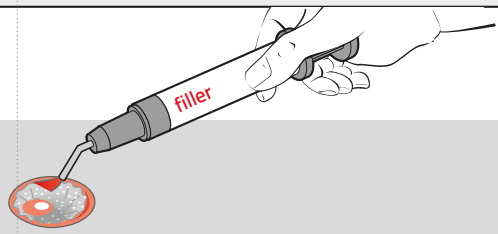


2

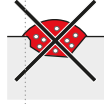
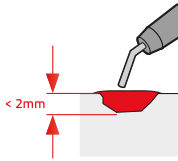
Microtip aanbrengen



3

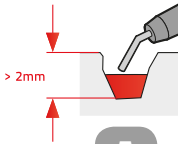


3.1 < 2mm filler

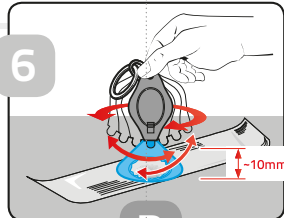


4

3.2 > 2mm filler



A



6

B



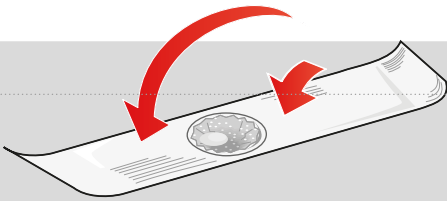
C



4

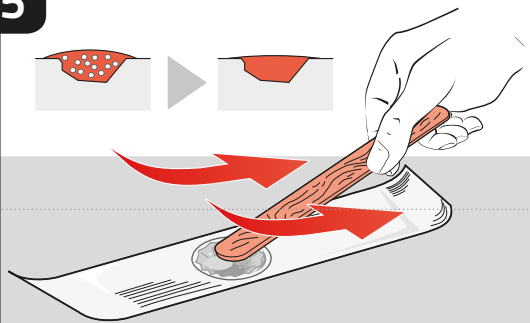
4

Transparante folie



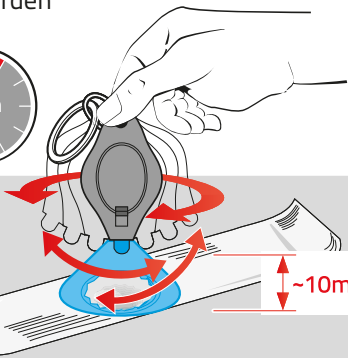
5

Eventuele luchtbelletjes verwijderen



6

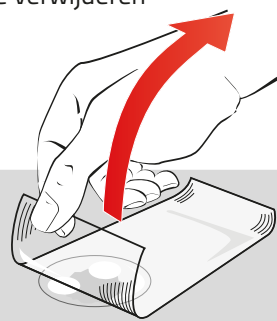
Uitharden



~10mm

7

Folie verwijderen

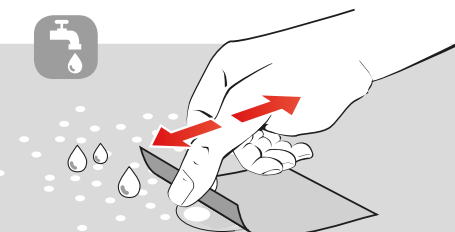


8

Voorzichtig schuren

A P 1200

B P 2000



9

Op glans polijsten

A

B

